

Real Deals

BROUGHT TO YOU BY ISUZU

JANUARY / FEBRUARY / MARCH 2025



*PAGE 10



*PAGE 12



*PAGE 16



*PAGE 18



*PAGE 21



Genuine Parts for N-Series

For genuine peace of mind, maintain your Isuzu N-Series Truck by using Isuzu Genuine Parts which are developed and manufactured to stringent quality standards, providing you with maximum productivity, performance, and future re-sale value. All backed by a 12-month unlimited kilometre parts-only warranty, or 3-year unlimited kilometres parts & labour warranty when fitted by an authorised Isuzu Trucks dealer, because reliability is everything!

MIRROR HEAD ASSEMBLY

92075042	N-Series with 19" Manual Main & Spotter Mirror – Left Hand Side	\$190.20
92075041	N-Series with 19" Manual Main & Spotter Mirror – Right Hand Side	
92075044	N-Series with 19" Electric Main & Manual Spotter Mirror – Left Hand Side (Premium models)	\$240.00
92075043	N-Series with 19" Electric Main & Manual Spotter Mirror – Right Hand Side (Premium models)	



BRAKE PAD KITS

8982169240	NL* MY2008-Current – Steer Axle	\$396.50
8982169220	NN*/NPR MY2008-Current – Steer/Drive Axle	\$287.00
8982169210	NN*/NL* MY2008-Current – Drive Axle	\$330.55
8972116910	NQ* MY2008-Current – Steer Axle	\$381.40
8983350840	NQ* MY2008-Current – Drive Axle	\$452.55



DISC BRAKE ROTORS

8981710330	NL* MY2008-Current – Steer Axle	\$428.30
8973872290	NN*/NPR MY2008-Current – Steer Axle	\$428.30
8982488970	NN*/NL* MY2008-Current – Drive Axle	\$409.65
8982488980	NP* MY2008-Current – Drive Axle	\$483.75
8981052720	NQ* MY2008-Current – Steer Axle	\$537.70
8982927430	NQ* MY2008-Current – Drive Axle	\$660.35

*Applies to all models in range.

BRAKE SHOES & DRUMS

5878323750	NPS MY2008-Current – Steer Axle Shoe Kit (includes 4 x Shoes 8983485800)	\$599.00
5878317750	NPS MY2008-Current – Drive Axle Shoe Kit (includes 4 x Shoes 8972010610)	\$599.00
8982927610	NPS MY2008-Current – Steer Axle Brake Drum	\$386.40
8970812192	NPS MY2008-Current – Drive Axle Brake Drum	\$312.15



Air-Con Components

CONDENSER ASSEMBLY

8981330421	NL*/NM*/NN* MY2011-Current	\$485.70
8980424561	NN*/NP*/NQ* MY2011-Current	\$483.90

*Applies to all models in range.

COMPRESSOR ASSEMBLY

8982861990	NL*/NM*/NN* with 4JJ1 Engine MY2008-Current	\$1,115.20
8982861970	NP*/NQ* with 4HK1 Engine MY2008-Current	\$1,115.20

*Applies to all models in range.



RECEIVER DRYER

1835350970	All N-Series MY2008-2014	\$107.30
8982824820	All N-Series MY2015-Current	\$103.25

THERMAL EXPANSION (TX) VALVE

8980473830	All N-Series MY2008-Current	\$111.30
-------------------	-----------------------------	-----------------



HEATER EVAPORATOR ASSEMBLY

8980741161	All N-Series MY2008-Current	\$400.60
-------------------	-----------------------------	-----------------

RADAR COVER ASSEMBLY

8976598991	N Series MY2022-Current – Left Hand Side	\$124.40
8976598981	N Series MY2022-Current – Right Hand Side	\$124.40

TURN SIGNAL LIGHT ASSEMBLY

8981554590	N Series MY2008-2021 – Left Hand Side	\$78.75
8981554580	N Series MY2008-2021 – Right Hand Side	\$78.75
8975579110	N Series MY2022-Current – Left Hand Side	\$119.10
8975579100	N Series MY2022-Current – Right Hand Side	\$119.10

HEADLIGHT ASSEMBLY

8982413260	N Series MY2008-Current – Left Hand Side	\$244.95
8982413250	N Series MY2008-Current – Right Hand Side	\$244.95





Isuzu provides transport support for BlazeAid recovery efforts

Australia is home to many environments, unique with flora, fauna, and the communities that inhabit them.

Living in rural and regional areas of the country holds its manifold attractions but comes tempered with the risk of impacts from bushfires and other severe weather events.

[BlazeAid](#) is a volunteer-based organisation that works with families and individuals in rural Australia after natural disasters such as fires, floods and severe storms.

The not-for-profit organisation was founded by Rhonda and Kevin Butler, who experienced significant loss of property and livestock first-hand during the Black Saturday bushfires in 2009.

To assist the continued efforts of BlazeAid ahead of the 2024 bushfire season and future recovery efforts, Isuzu Australia Limited (IAL) has contributed two [Ready-to-Work Traypack](#) trucks for use as volunteer and equipment transport vehicles.

Home-grown support

IAL Sustainability and Compliance Manager, David Kirsanovs, said he hoped the two trucks would help ease the burden of rebuilding for BlazeAid volunteers and those affected.

“With volunteer-based operations such as BlazeAid, having reliable, high-quality equipment can make that much difference to their outreach work, improving efficiency in rebuilding efforts and saving time,” said Mr Kirsanovs.

“Rebuilding after these events can take months or even years, which is where the trucks can provide valuable long-term support to the teams on the ground.

“We recognise the time that BlazeAid and their volunteers invest is an invaluable gift to the communities who are getting back on their feet after such hard times,” he continued.

“Isuzu is grateful to be part of that journey with BlazeAid, and through them, supporting Australian families and people in their time of need.”

Help on hand

Tasks undertaken by BlazeAid on rural properties and farms are primarily focused on the repair and replacement of structures, which includes clearing fallen trees, fences and buildings, and general property clean-up.

The two light-duty Ready-to-Work trucks supplied by IAL—which are outfitted with heavy-duty, factory-fitted aluminium trays—are capable of carrying necessary tools, building supplies, and volunteers to site.

Importantly both light-duty trucks sit at a GVM of 4,500 kg, meaning they are driveable on a standard car licence, with an easy-to-use, two-pedal automated manual transmission.

The models are specified with a GCM of 8,000 kg and a towing capacity of up to 4,000 kg, which will assist BlazeAid volunteers in moving trailers and caravans to the base camps used in relief efforts.

Investing in community

The organisation now hosts huge numbers of volunteers each year, many of whom travel from overseas.

This is a marked evolution from BlazeAid’s grassroots origins, which began in the Butler’s shearing shed in regional Victoria after the Black Saturday bushfires.

With approximately three kilometres of fencing needing replacement, the Butlers faced a lengthy rebuild to complete it themselves, with no way to secure livestock.



One of the BlazeAid Isuzu Ready-to-Work trucks, the NNR 45-150 AMT Crew Traypack



IAL Sustainability and Compliance Manager, David Kirsanovs with BlazeAid Founder, Kevin Butler



Founders of BlazeAid, Rhonda Butler and Kevin Butler with BlazeAid CEO, Melissa Jones

Advertising in the local newspaper for assistance, they ended up with 25 volunteers, resulting in fresh fences in under a week.

Inspired by the incredible response of kind-hearted locals, BlazeAid was born.

As of 2024, the organisation has helped over 13,800 properties across Australia, contributing an estimated \$400 million towards disaster recovery efforts.

This includes education for community members and replanting of native trees and grasses to help the environmental recovery of areas significantly damaged during fire or flood.

“Communities and councils contact us in their time of need, and we establish a base camp for volunteers, often in places like cricket fields or sports ovals in the town we are supporting,” explained CEO of BlazeAid, Melissa Jones.

“At this stage, BlazeAid has established 215 base camps across Australia to lend a hand in disaster relief. This includes over 38,000 volunteers who have contributed 420,000 days of their time.

“We are deeply thankful to Isuzu Australia for their generous support and contribution. The addition of these two trucks will greatly enhance our capacity to assist rural communities and families in need across Australia.

“With these vehicles, our volunteers will be able to reach and operate in affected areas more efficiently, delivering the essential aid required for rebuilding and recovery.”

BlazeAid’s good work doesn’t stop at the physical aspects of rebuilding; the organisation is also active in building future community resilience and coordinating social activities for farmers and community members with the goal of growing stronger home-grown support through connection.

This remains a primary objective for Kevin and Rhonda, who 15 years on from their own personal disaster and recovery effort, are still focused on paying the favour forward.

“We have had help, now let’s give our neighbours a hand too,” said BlazeAid Founder, Kevin Butler.

Further information on BlazeAid, including opportunities for support, donation, and volunteering can be found at blazeaid.com.au.

Genuine Parts for F/FX/FY-Series

For genuine peace of mind, maintain your Isuzu F/FX/FY-Series Truck by using Isuzu Genuine Parts which are developed and manufactured to stringent quality standards, providing you with maximum productivity, performance, and future re-sale value. All backed by a 12-month unlimited kilometre parts-only warranty, or 3-year unlimited kilometres parts & labour warranty when fitted by an authorised Isuzu Trucks dealer, because reliability is everything!

RADIATOR ASSEMBLY

8983008421	FR*/FS* with 4HK1 Engine (210 HP) & Manual Transmission MY2016-Current	\$2,248.35
8983008430	FR*/FS* with 4HK1 Engine (210 HP) & AMT Transmission MY2016-Current	\$2,455.40
8983008441	FR*/FS* with 4HK1 Engine (240 HP) & Manual Transmission MY2016-Current	\$1,871.45
8983008451	FR*/FS* with 4HK1 Engine (240 HP) & AMT Transmission MY2016-Current	\$2,256.80
8983230260	FR*/FS* with 6HK1 Engine (260 HP) & Manual Transmission MY2016-Current	\$2,345.15
8983230290	FR*/FS* with 6HK1 Engine (260 HP) & AUTO Transmission MY2016-Current	\$2,455.40
8983261310	FTR/FV* with 6HK1 Engine (260 HP) & Manual Transmission MY2016-Current	\$2,561.20
8983261320	FTR/FV* with 6HK1 Engine (260 HP) & AUTO Transmission MY2016-Current	\$2,561.20
8983223350	FX*/FY* with 6UZ1 Engine & AUTO Transmission MY2011-Current	\$4,273.05

*Applies to all models in range.

RADIATOR HOSES

8980105721	Upper Inlet Hose - FR* with 4HK1 Engine MY2008-Onwards	\$24.05
8980105762	Upper Inlet Hose - FR*/FS* with 6HK1 Engine MY2008-Onwards	\$73.00
8980105781	Upper Inlet Hose - FV* with 6HK1 Engine MY2008-Onwards	\$73.00
1214379761	Upper Inlet Hose - FX*/FY* with 6UZ1 Engine & AUTO Transmission MY2011-Current	\$81.50
8980105732	Lower Outlet Hose - FR* with 4HK1 Engine MY2008-Onwards	\$88.95
8980105771	Lower Outlet Hose - FR*/FS* with 6HK1 Engine MY2008-Onwards	\$88.95
8980794301	Lower Outlet Hose - FV* with 6HK1 Engine MY2008-Onwards	\$88.95
1214379891	Lower Outlet Hose - FX*/FY* with 6UZ1 Engine & AUTO Transmission MY2011-Current	\$132.55

*Applies to all models in range.



COOLANT EXPANSION TANK

8981717571	FR*/FS*/FT*/FV* MY2016-Current	\$49.45
1214811432	FX*/FY* MY2016-Current	\$350.70

*Applies to all models in range.



WATER PUMP

1873109740	FR*/FS*/FT*/FV* with 6HK1 Engine MY2007-Current	\$655.05
1873111180	FX*/FY* with 6UZ1 Engine MY2008-Current	\$1,105.55

*Applies to all models in range.



COOLING FAN CLUTCH

8983402110	FR*/FS* with 4HK1 Engine (240 HP) MY2016-Current	\$365.30
8982238360	FR*/FS* with 4HK1 Engine (210 HP) MY2016-Current	\$349.90
8980752901	FR*/FS*/FT*/FV* with 6HK1 Engine MY2008-Current	\$501.00
8980710420	FX*/FY* with 6UZ1 Engine MY2008-Current	\$1,229.70

*Applies to all models in range.



COOLING FAN (BLADE)

8982150250	FR*/FS* with 4HK1 Engine (240 HP) MY2016-Current	\$467.40
8980734671	FR*/FS*/FT*/FV* with 6HK1 Engine MY2008-Current	\$320.95
8982967920	FX*/FY* with 6UZ1 Engine MY2008-Current	\$491.95

*Applies to all models in range.



RADIATOR GRILLES

8982508291	FR*/FS* MY2016-Current - Chrome	\$1,123.05
8982508331	FT*/FV* MY2016-Current - Chrome	\$1,204.70
8974685620	FX*/FY* MY2017-Current - Chrome	\$1,204.70

THERMOSTAT

8982959210	6HK1 Engine MY2008-Current	\$45.90
8983192540	6UZ1 Engine MY2011-Current	\$173.75



ISUZU SERVICE AGREEMENTS

Zero-stress servicing. Brought to you by Isuzu.

No business wants big, unexpected bills. But with an Isuzu service agreement, you can flatten your truck servicing costs into a predictable monthly payment (or upfront fee with Isuzu Essentials). You'll also be part of one of Australia's biggest dealer networks, so you can book a service at locations around the country. With the new Chain of Responsibility laws, proper servicing will protect your business. Lastly, service agreements come with Isuzu Care, Australia's most comprehensive truck customer care programme.

To find out more, see your nearest dealer or visit isuzu.com.au/care-support/service-agreements.



Ask your local Isuzu dealer about which service agreement is right for you.

- Isuzu Essentials
- Isuzu Essentials Plus
- Isuzu Total
- Isuzu Heritage

DEALER NETWORK

Isuzu has Australia's biggest dealer network. If you book into any Isuzu Service Centre nationwide, they'll have access to your truck's comprehensive service history



ISUZU CARE

Australia's most comprehensive truck customer care programme, Isuzu Care has a team of service specialists to ensure that owning your Isuzu is a great experience. To contact them, just freecall 1800 035 640.



STREAMLINED PROCESS

Maintaining your trucks under a Priority Service Agreement is quick and easy. With prearranged payments, you won't have to worry about the hassle of arranging finances before your drivers drop off and pick up trucks on the day of the service.



CHAIN OF RESPONSIBILITY & NHVR

With a Priority Service Agreement, you're clearly demonstrating that you've pre-planned your fleet maintenance and have put established procedures in place. That means establishing NHVR (National Heavy Vehicle Regulator) fleet maintenance requirements couldn't be easier.

ONLY THE BEST SERVICE AND PARTS

Using a combination of the latest diagnostic software and Isuzu-approved parts, our qualified Isuzu technicians will keep your truck in tip-top condition.



REDUCE TOTAL COST OF OWNERSHIP

Better servicing helps reduce unforeseen overheads and results in more reliable, fuel-efficient trucks. And that means less downtime and lower total cost of ownership.



FACTORY TRAINED TECHNICIANS

Why would you trust your Isuzu to anyone but an Isuzu-trained technician? With meticulous training tailored specifically to Isuzu trucks, our team carries out servicing and repairs to manufacturer-documented standards (and that means the highest level possible!).



RESALE VALUE

Thanks to the comprehensive service history you receive from Isuzu, you'll always get the best price for your truck when the time comes for an upgrade.

Genuine Accessories

Isuzu Genuine Accessories are designed to improve your total driving experience through the enhancement of your truck's practicality and style. All Isuzu Accessories are designed and manufactured to meet Isuzu's rigorous engineering standards.



HEAVY-DUTY CANVAS SEAT COVERS

Ultra-hard wearing waterproof seat cover tailored to your Isuzu Truck, offering easy fitment and maximum surface protection of your seats.

92957917	F-Series with ISRI 6860/875 MY2008-Current – Driver Seat Only	\$164.80
92957347	NL*/NM* MY2008-2021 – Driver & Passenger Seat	
92958624	NL*/NM* MY2022-Current – Driver (Suspension) & Passenger Seat	
92957344	NN*/NP*/NQ* MY2008-2015 – Driver (Suspension) & Passenger Seat	\$242.60
92955658	NN*/NP*/NQ* MY2015-Current – Driver (Suspension) & Passenger Seat	
92957341	NN*/NP*/NQ* MY2008-Current – Rear Seat	

*Applies to all models in range.

RUBBER FLOOR MATS

Durable rubber matting tailored to the footwell of your Isuzu Truck for seamless fitment and ultimate protection of the floor lining.



5867131570	NL*/NM* MY2008-Current	
5867130740	NN*/NP*/NQ* MY2008-Current	
1867231010	FR*/FS* MY2008-Current	\$72.50
1867231022	FT*/FV* MY2008-Current	
1867130771	FX*/FY* MY2008-Current	

*Applies to all models in range.



SLIMLINE WEATHERSHIELD SET

5867602930	N/F/FX/FY Series MY2008-Current	\$193.50
------------	---------------------------------	----------

SAFETY TRIANGLES

92958759	To suit All Makes & Models of Trucks & Cars.	\$35.00
----------	--	---------



KERBSIDE MIRROR KIT

92956237	N/F/FX/FY Series	\$145.20
----------	------------------	----------



Isuzu Towbar Assembly Carries Weight

The practicality and application suitability of the market leading Isuzu Trucks N Series range has been further enhanced following the recent release of the new genuine Isuzu 4.0 and 4.5 tonne towbar package.

Designed and manufactured in Australia to meet the exacting specifications of Isuzu Australia Limited's (IAL's) Product Development Centre in Melbourne, the new towbars are rated to 3.5 tonne as standard and can be uprated to 4.0 or 4.5 tonne capacity with the fitment of a custom tongue.

The towbar design also allows for 50 or 70mm Towball (exclusive to Isuzu), to be used with an interchangeable tongue that has the ball pre-tensioned for compliance & full peace of mind, providing further flexibility as the same towbar assembly can be used for equipment rated at 3.5 through to 4.5 tonnes.

IAL National Parts Sales Manager Joel Gledhill said the new towbars were another example of the brand's broad range of genuine parts & accessories, specifically designed for Australian conditions and unique application and compliance requirements. "We've developed this new towbar package in partnership with leading component design and manufacturing outfit, Abcor, the same provider produces our custom designed and highly regarded genuine bullbar range," said Mr Gledhill.

"And the motivation for this product was the same as for our industry-leading bullbar: in direct response to customer feedback and demand.

"Abcor have extremely high engineering and production standards, and the quality control and product output is exceptional



EASY CUSTOMISATION

Isuzu's newest towbar designs are made exclusively to suit the Isuzu N Series truck range and can be fitted to more than 100 different cab chassis and pre-built Ready-to-Work models.

Each towbar component has been robotically welded for high precision and is fully powder-coated, guaranteeing longevity and superior protection.

The modular design also allows for optimised end plate configurations—meaning a single end plate matches multiple Isuzu truck models. This drastically reduces chassis interference (only minor drilling is required to attach the end plate) with no need for welding, painting, or touch-ups, protecting the integrity of the vehicle chassis and drivetrain.

TRIED AND TESTED

All components are fully validated to Australian Design Rules (ADR) standards after passing rigorous dynamic, static and chain-pull tests, meeting relevant compliance and Chain of Responsibility (CoR) requirements.

Relevant Component Registration Number (CRN) or Component Type Approval (CTA) for the tow bar components is attached to the relevant truck model's ADR approval with clear and detailed labelling to explain towing capacity including de-rating based on NHVR Vehicle standards guide is included on the towing assembly.



Whether it's towing the skid-steer to and from the worksite or taking the caravan on an adventure, Mr Gledhill said Isuzu truck customers can continue to tow with certainty and composure.

"Our own Future of Trucking research report confirms everyone from owner-operators through to larger truck fleets in the road transport industry are demanding industry-specific modifications that meet the needs of their business.

"In fact, 65 per cent of those we surveyed believed it critical to their businesses to have access to application-centric turn-key truck solutions.

"We've developed and produced this latest towbar product to maximise the towing capacity and application versatility of our N Series truck range.

"We've brought the Isuzu design standard to this, so our customers can have the same peace of mind in the performance of the genuine components fitted to their truck, from the bullbar through to the towbar," Mr Gledhill concluded.



N-Series Towbar Assemblies

92958031	NPR/NQR Cab Chassis (MWB)	
92958032	NNR	
92958033	NPR/NQR Tipper	
92958034	NPR/NQR Cab Chassis (SWB/MLWB/LWB/AH/Crew Cab)	\$985.00
92958035	NPS	
92958036	NLR/NLS/NMR (excl. MWB Traypack)	
92958037	NLR/NLS/NMR Tipper	
92958038	NLR/NMR Traypack (MWB)	
92958041	4,500kg rated 70mm Towball & Tongue Upgrade for NPR, NPS, NQR models.	\$799.00
92958049	4,000kg rated 70mm Towball & Tongue Upgrade for NLR, NLS, NMR, NNR models.	\$749.00
92955674	Electric Trailer Brake Control Kit - 24 Volt	\$749.00

STAND OUT WITH ANTARES

Named after the radiant Antares star, these driving lights are engineered to illuminate the darkest roads, ensuring your journey is safe and spectacular.

Co-designed in Australia for Australian roads, the Antares is sure to meet all your needs and more.

SAFETY & VISIBILITY DAY & NIGHT

- Daytime Running Lamps provide visibility during daylight to alert oncoming traffic
- Unique look position lamps increase visibility in urban environments

SELECTABLE OUTPUT MODES

- Easily adjust between high and low output for optimal driver comfort

DIECAST ALUMINUM HOUSING & BRACKET

- Durable, lightweight and corrosion resistant
- Mounting holes for maximum stability

TOUGH DRL INTEGRATED COVERS

- Provides stylish protection against sand, dust, mud and bugs.
- Includes distinctive Antares edgelight design



COMPOSITE LIGHTING DESIGN

- 3x projector spot beams exceed 800m distance
- 9x diamond glow position lamp with unique umbrella reflector technology
- 8x wide beam 10W LED clusters for even wider light dispersal (80m)

COVER DETECTION

- Switches off main beam when cover applied for greater operating efficiency

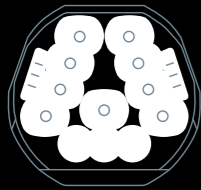
TOUGH CONSTRUCTION

- IP69K dust & waterproof, suits harsh Australian conditions
- Hard-coated UV stable polycarbonate lens

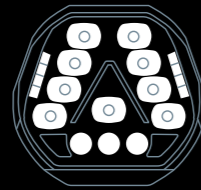
PLUG & PLAY WIRING HARNESS

- With H4 & HB3 adaptors for easy DIY install

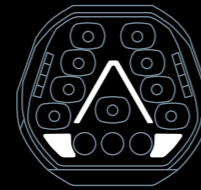
1F0 358 228-871



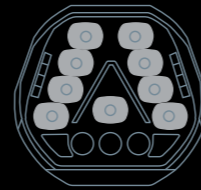
HIGH OUTPUT MODE



LOW OUTPUT MODE



DAYTIME RUNNING LIGHT



POSITION LIGHT

The Hella Antares integrates lighting techniques mastered in collaboration with the largest automotive brands and decades of Australia's harshest driving conditions, creating a composite beam that delivers incredibly constant and impressive output:

- 80m wide beam exceeds 150m distance with the ultra-wide specific LED clusters
- Impressive mid-range width of 46m that exceeds 650m distance with the umbrella LED optic
- Precision Projector LED gives a total distance exceeding 800m
- All at the industry standard 1 Lux.

1F035822871 Hella Antares **\$799.95**

TOUGH ON THE ROAD

BLACK MAGIC



360° BLACK

HIGH LEVEL LIGHT OUTPUT

- Up to 20,000 effective lumens

VERSATILE MOUNTING

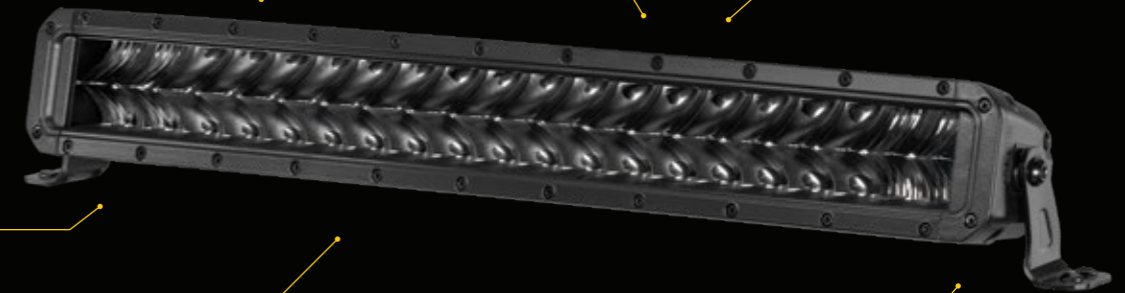
- Upright/pendant
- Fully adjustable slide brackets also available

INTEGRATED THERMAL MANAGEMENT

- Thermal Management = high output Long Lasting LED performance

BLACK OUT APPEARANCE

- Unique design creates black out appearance without effecting performance



TOUGH CONSTRUCTION

- Tough design and fully sealed, protects against sand, dust and water!
- Suits harsh Australian conditions
- Tested to the exacting Hella Germany Rallye standard

IMPACT RESISTANT PC LENS

- UV stabilised to protect against sun damage
- Tested against high vibration resistance



1GJ 358 197-301
20" Single row light bar
\$199.50



1GJ 358 197-411
30" Double row light bar
\$355.00



1GJ 358 197-401
21" Double row light bar
\$271.45



1FJ 358 196-461
13" Double row light bar
\$185.10



1FA 358 176-831
3.2" Cube kit (flood, flush)
\$153.70



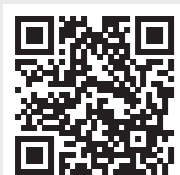
Australia

Qantas Business Rewards Trade Mate

Thanks to our partnership with Qantas Business Rewards, your business can earn Qantas Points as an Isuzu Trade Mate*. When you become an Isuzu Trade Mate member your business will earn 1 Qantas Point for every dollar you spend on eligible Isuzu Truck parts or accessories purchased from participating authorised Isuzu Dealers.

Apply now to earn Qantas Points for your business*.

Terms and Conditions apply.



To find out more scan the code or visit parts.isuzu.com.au/isuzu-trade-program

Reward your business for purchasing Isuzu Truck parts and accessories..

Your business can use Qantas Points earned on a range of rewards including booking flights, upgrades and more. Or you can transfer your business's Qantas Points to any Qantas Frequent Flyer account to use on car hire, hotels, wine or choose from over 20,000 products at the Qantas Marketplace*.



Genuine Filtration & Lubricants

GENUINE SERVICE FILTER KITS

Included are oil filters, fuel filter/s, sump plug washer, sediment filters and PCV filters (where applicable).

92958223	NL*/NM*/NN* with 4JJ1 Engine MY2008-Current	\$136.55
92958224	NP*/NQ* with 4HK1 Engine MY2008-Current	\$164.20
92958225	FR*/FS* with 4HK1 Engine MY2016-Current	\$208.80
92958226	FR*/FS*/FT*/FV* with 6HK1 Engine MY2016-Current	\$189.40
92958227	FX*/FY* with 6UZ1 Engine MY2016-Current	\$306.10

*Applies to all models in range.



ISUZU NEXTGEN PLUS 10W-40 CK-4 E8/E11 ENGINE OIL

Premium Engine Oil that adheres to the latest E8/E11 ACEA specification and approval process. Using a carefully chosen base stock formulation and premium additives that meet the demands of Euro 5 & 6 engine requirements, it has been engineered to reduce oxidation and assist with piston cleanliness, decreasing soot and carbon build-up. Recommended for use in Isuzu Trucks and has wider appeal across a range of other commercial vehicles including those with Exhaust Gas Recirculation (EGR), Diesel Oxidation Catalyst (DOC) systems and Diesel Particulate Filter (DPF) exhaust after-treatment systems, making it a staple for any automotive workshop.

92958803	5 Litre Bottle	\$50.30
92958804	20 Litre Drum	\$187.15
92958805	205 Litre Drum	\$1,733.85
92958806	1000 Litre IBC	\$7,745.45



ISUZU LONG LIFE ANTIFREEZE PREMIXED COOLANT

Premixed SI-OAT formulation based on Mono Ethylene Glycol, free of amines, nitrates and phosphates and provides superior aluminium protection for radiator components. Green in colour.

92957732	5 Litre Bottle	\$30.60
92957733	20 Litre Drum	\$118.55
92957734	205 Litre Drum	\$984.50

ISUZU DIESEL INJECTOR CLEANER ADDITIVE

A high performance diesel fuel injector cleaner designed for use in passenger car and truck engines. Suitable for all diesel-powered vehicles including latest generation common rail diesel and bio-diesel blends.

92958716	300mL Bottle	\$9.85
92958717	1 Litre Bottle	\$26.20



Narva Lighting & Electrical

NARVA®
THE VISION TO GO FURTHER



MODEL 70 SERIES 9-33V LED LAMPS WITH IN-BUILT RETRO REFLECTORS



97000 REAR STOP/TAIL AND
DIRECTION INDICATOR LAMP **\$69.20**

97010 REAR STOP/TAIL, DIRECTION
INDICATOR AND REVERSE LAMP **\$76.85**



97202 REAR STOP/TAIL AND
DIRECTION INDICATOR LAMP **\$76.85**

97210 REAR STOP/TAIL, DIRECTION
INDICATOR AND REVERSE LAMP **\$84.55**

MODEL 88 SERIES 9-33V LED LAMPS WITH IN-BUILT RETRO REFLECTORS



98840 REAR STOP/TAIL AND
DIRECTION INDICATOR LAMP **\$133.70**



98850 REAR STOP/TAIL, DIRECTION
INDICATOR AND REVERSE LAMP **\$181.35**



98856 REAR STOP/TAIL AND
DIRECTION INDICATOR LAMP **\$195.20**

CABLE TIES - 100 PACK

UL approved nylon tie, with a UL94V-2 flammability rating and meets or exceeds tensile strength MIL-S 23190E with an operating temperature of -40°C to 85°C.



56406	4.8 X 300MM	\$13.30
56408	4.8 X 370MM	\$15.75
56410	7.6 X 370MM	\$31.50
56414	9.0 x 530MM	\$46.70

METAL TRAILER PLUGS & SOCKETS



82161BL	7 Pin Large Round Plug	\$11.50
82062BL	7 Pin Large Round Socket	\$13.20

SMART, COMPACT, POWERFUL
INTELLI-START JUMP STARTERS



PROJECTA



IS3000 12/24V 3000A Industrial Jump Starter **\$1,568.05**

IS5000 12/24V 5000A Industrial Jump Starter **\$2,117.05**



IS2000 12/24V 2000A Intelli-Start Professional
Lithium Jump Starter and Power Bank **\$635.15**

All Makes



FLEETGUARD® SERVICE FILTERS FOR CUMMINS ISXE5 & X15

When you buy a Cummins Filtration product, you are assured superior warranty protection from the point of purchase throughout the recommended life of the product. Unlike industry competitors, Fleetguard® warranty coverage is not pro-rated, which means you are fully protected through the recommended service life of the product. These factors make the Cummins Filtration Warranty one of the best in the industry.

LF14000NN	Lube Filter – NanoNet®	\$61.00
FF5776	Fuel Filter	\$63.80
FS19764	Fuel/Water Separator Element	\$35.65
AS2474	Air/Oil Separator Element	\$15.35

FLEETGUARD® 4WD FILTER KITS

Includes Oil, Fuel & Air Filter

MK14283	Toyota Hilux GUN123R/126R/136R/122R/125R with 2.4L & 2.8L Turbo Diesel Engine (1GD-FTV) MY2015-Onwards	\$68.30
MK13940	Toyota Landcruiser 200 Series VDJ200 with 4.5L V8 Turbo Diesel Engine (1VD-FTV) MY2007-Onwards	\$72.60
MK13458	Toyota Landcruiser 70 Series VDJ76R/78R/79R with 4.5L V8 Turbo Diesel Engine (1VD-FTV) MY2007-Onwards	\$63.95
MK14280	Ford Ranger (PX), Everest (UA) Mazda BT-50 (UP0Y) with 2.2L & 3.2L Turbo Diesel Engine MY2011-Onwards	\$69.30
MK14314	RAM Truck 2500/3500 with Cummins ISB 6.7 I6 Turbo Diesel Engine MY2013-Onwards	\$300.95

TIMKEN

TIMKEN® WHEEL END KITS

Includes Hub Seal, Inner & Outer Wheel Bearings for one (1) wheel end.



WBK4SCR	FF Steer Axle (SKF Seal 35066 / Inner SET413 / Outer SET406)	\$141.05
WBK4SUCR	FF HD Steer Axle (SKF Seal 35066 / Inner SET413 / Outer SET409)	\$170.40
WBK4SCHB	FL Steer Axle (SKF Seal 43764 / Inner SET423 / Outer SET424)	\$367.45
WBK3DCR	R Drive Axle (SKF Seal 47697 / Inner SET403 / Outer SET401)	\$195.60
WBK3DCRV	R Drive Axle (SKF Seal 47693 / Inner SET403 / Outer SET401)	\$206.20



STEMCO® HUBCAPS

343-4009	Trailer Axle 5-1/2" bolt circle	\$31.90
343-4024	Steer Axle 4-1/2" bolt circle	\$64.75
359-5995	Window kit	\$13.25



SKF® BRAKEMASTER TURBO-2000 AIR DRYER

620300	Air Dryer Assembly – 12 Volt System	\$789.00
T2000SK-P	Service Kit includes Desiccant Cartridge, Replacement Valves & Seals	\$346.75
T224-P	Desiccant Cartridge – Filtration Plus	\$199.75



ALLISON GENUINE PARTS™ FILTER KITS

29558329	3000/4000 Series with 4" Oil Pan	\$176.90
29539579	1000/2000 Series with External Screw on Filter	\$30.40



VALVOLINE SYN GARD™ 668 ATF

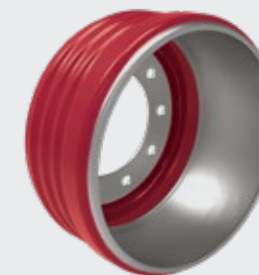
An approved full synthetic heavy-duty automatic transmission fluid for use in Allison Transmissions. This fluid is formulated to meet and exceed the requirements of modern day transmissions where lubricants encounter very harsh conditions to provide extended drain capability. Recommended for Allison transmissions and similar applications calling for TES-668, TES-295, TES-468 and TES-389 approved fluids.

1448.20	20 Litre (Drum)	\$323.55
1448.28	208 Litre (Drum)	\$3,226.75



MERITOR® RED CAST BRAKE DRUMS – 335MM PCD

MBD119	Steer Axle – 16.5" x 5" 335mm PCD 10 Stud	\$219.85
MBD177	Steer Axle – 16.5" x 6" 335mm PCD 10 Stud	\$231.20
MBD192	Drive Axle – 16.5" x 7" 335mm PCD 10 Stud	\$184.45



MERITOR® Q-PLUS 16.5" X 7" BRAKE SHOE KIT

Reduce your downtime and overall running costs by using the market-leading Meritor® Genuine braking components engineered to OEM specifications.

KSMA2124707QP	MA212 Standard Lining (21,000 lbs GAWR)	\$126.00
KSMA3124707QP	MA312 Premium Lining (23,000 lbs GAWR)	\$169.00



MERITOR® BRAKE CAMSHAFT (S-CAM)

To suit Q-Plus 1.5" x 28 Spline brake applications

2210V7536FW	"Z" Camshaft Length 11.6" – Right Hand	\$46.95
2210W7537FW	"S" Camshaft Length 11.6" – Left Hand	\$46.95
2210P7452	"Z" Camshaft Length 9.32" – Right Hand	\$95.50
2210Q7453	"S" Camshaft Length 9.32" – Left Hand	\$95.50
2210Z7670	"Z" Camshaft Length 15.20" – Right Hand	\$111.60
2210A7671	"S" Camshaft Length 15.20" – Left Hand	\$111.60
KIT8042	Brake Camshaft Repair Kit	\$36.00



MERITOR® SPRING BRAKE CHAMBERS

MBC2424	Size 24/24 2.5" Stroke – Standard	\$78.30
MBC2430	Size 24/30 2.5" Stroke – Standard	\$56.50
MBC3030	Size 30/30 2.5" Stroke – Standard	\$56.50
MBC3636	Size 36/36 2.5" Stroke – Standard	\$120.90



MERITOR® GENUINE KING PIN KITS FOR FG941 AXLE

R201310	Bronze Ream Bushing (Traditional)	\$309.90
R201309	Ezi-Steer Composite Ream Bushing	\$275.00
R203010	Readysset™ No-Ream Bi-Metal Bushing	\$418.60
R202010	Fastset™ No-Ream Stainless Steel Spiral Bushing (Heavy Duty)	\$709.45



MERITOR® CS9 AIR SPRINGS & SHOCK ABSORBERS

Fitted to various Maxitrans Trailers

21229214	Air Spring Assembly	\$245.90
21228392	Shock Absorber – Low Mount	\$202.60
21228930	Shock Absorber – Top Mount	\$229.20



MERITOR® HEIGHT CONTROL VALVE

R309624	Delayed Response (Hadley H00500C) used on Kenworth Airglide applications.	\$176.00
----------------	---	-----------------



All Makes

HENDRICKSON

HENDRICKSON INTRAAX® & HT™ SHOCK ABSORBERS

S-20889	HT230/AAT230-250 – Non-Road Friendly Suspension (RFS)	\$144.65
S-21699	HT230/AAT230-250 – Standard Road Friendly Suspension (RFS)	\$183.55

HENDRICKSON TRI-FUNCTIONAL™ BUSH KITS

A-31624	AAT/HT with 6" Wide Bush	\$187.20
S-31622	AANT with 3" Narrow Bush	\$354.85



HENDRICKSON® INTRAAX® & HT™ AIR SPRING ASSEMBLIES

S-21800	AAT/AANT230 (except 12" ride-height)	\$278.65
S-21208	HT230 – Top Mount	\$290.35
C-20901	AAT250 (except 12" ride-height)	\$324.25
C-20127	HT250 – Underslung	\$343.10



HENDRICKSON® MAXX22T BRAKE PAD KIT

S-35303-1	415mm Rotor HDT-415 ADB	\$404.15
------------------	-------------------------	-----------------



**BENDIX®
D-2 GOVERNOR
VALVE**

275707N	\$109.95
----------------	-----------------



**BENDIX®
E-6 DUAL BRAKE
TREADLE VALVE**

286171N	\$214.35
----------------	-----------------



ISRI® 6860/870 PRO AIR SEAT ASSEMBLY

Advanced design incorporating third generation suspension technology ensures maximum safety and comfort. Efficient operating weight range of 50 to 150kg, integrated 3-point seat belt, integrated head restraint, adjustable vertical shock absorber, integrated pneumatic system (IPS) dual stage air lumbar with lateral support and anatomically shaped cushion and backrest foams

89110-05	Drivers Side Seat with Charcoal Cloth - Suits most Kenworth, Freightliner & Western Star vehicles.	\$3,116.90
-----------------	--	-------------------



EATON® ADVANTAGE EASY-PEDAL™ CLUTCH & INSTALLATION KITS

Offering more protection, less maintenance, and maximum uptime and performance. With the use of assist springs, the Easy-Pedal™ design reduces pedal effort by as much as 50%, increasing driver satisfaction and ease of operation.



308935-529	2" 10-Spline 2050 Lb. Ft.	\$1,882.05
308935-515	2" 10-Spline 2050 Lb. Ft. Pre-Damper	\$2,258.25
308938-556	2" 14-Spline 2250 Lb. Ft.	\$2,835.45
308938-583	2" 14-Spline 2250 Lb. Ft. Pre-Damper	\$2,849.55
K-2468	RT Series with 10-Spline Input Shaft	\$452.20
K-3768	RT Series with 14-Spline Input Shaft	\$505.10
K-4125	RT Series with Hydraulic Clutch Release	\$610.25



NULON® PRO-STRENGTH BRAKE CLEAN

BRAKE400	400mL Aerosol	\$11.50
-----------------	---------------	----------------

NULON® HEAVY DUTY MULTI-PURPOSE DEGREASER

HDED400	400mL Aerosol	\$6.20
----------------	---------------	---------------



REDARC® TRAILER LIGHTING VOLTAGE REDUCERS

Provides 12V circuits for the lighting of brake, tail and indicators on a trailer when towed behind a 24V vehicle with additional reversing lamp circuit.

VRMREV	10A / 5 Circuit	\$258.60
VRLREV	20A / 5 Circuit	\$344.25



REDARC® HAND BRAKE ALARM

The REDARC Handbrake Alarm is used to monitor the handbrake switch and doorframe switch, providing audible and visual warning if the door is opened while the handbrake is not applied.

HBA1224	Hand Brake Alarm 12-24 Volt	\$191.95
HBAKIT-001	Connector Kit - to suit HBA1224	\$17.70



REDARC® PURE SINE WAVE INVERTERS

Produces a pure sine wave output, essential for powering 240V equipment drawing power from a 12V battery while on the road.

R12700RS	12V 700W Inverter	\$711.45
R121500RS	12V 1500W Inverter	\$1,266.65



ANCRA® WINCHES WITH STRAPS

4920320	Slide-On Winch with 50mm x 9m Strap	\$67.55
4356420	Clip-On Winch with 50mm x 9m Strap	\$86.20
4920320RC	Slide-On Ratchet Cap Winch with 50mm x 9m Strap	\$93.95
4356420RC	Clip-On Ratchet Cap Winch with 50mm x 9m Strap	\$110.15
4231310	Straight Winch Handle with Grip - 550mm Long	\$18.10

ANCRA® PALLET ANGLES

FLCP40001040MM	1040mm - Tiedown Strap type	\$19.90
3478L	130mm - Chain type	\$18.45



ANCRA® LOADBINDERS & GRADE 70 CHAIN KITS

LB0302	8mm-10mm Ratchet Loadbinder with Grab Hooks	\$44.65
49796-10	8mm-10mm Loadbinder with Grab Hooks	\$30.70
40552-8MM-9M-GH	Chain Kit 8mm x 9m with Winged Grab Hooks (Grade 70)	\$78.15
40552-10MM-9M-GH	Chain Kit 10mm x 9m with Winged Grab Hooks (Grade 70)	\$125.20



WATTS DUST BLOWER

BG12	Dust Blower Gun – Extendable 5.25m Hose	\$27.00
-------------	---	----------------



WATTS WHEELS® STAINLESS STEEL WHEEL SIMULATOR KIT

To suit various Japanese truck models with 6 Stud Wheels including Isuzu, Hino, Fuso & UD Trucks.



ISRT-1606S	16" x 5.5" 6 Stud	\$664.00
ISRT-1756	17.5" x 6" 6 Stud	\$664.00
ISRT-1756DP	17.5" x 6.75" 6 Stud	\$664.00
ISRT-1956	19.5" x 6.75" 6 Stud	\$791.80



WATTS WHEELS® CHROME PLASTIC AXLE COVER SET

Includes: 4 x Rear Axle Covers, 2 x Front Axle Covers, 60 x Screw-on Nutcovers.

AFKL001PL	285mm PCD 10 Stud with 33mm Wheel Nuts	\$461.80
------------------	--	-----------------

Best Value Parts (BVP)

Isuzu Best Value Parts (BVP) portfolio offers a comprehensive range of parts to suit older model Isuzu Trucks, all manufactured to high standards and backed by a 12-month, unlimited kilometre warranty. The BVP range is available exclusively through our 74 Service & Parts locations Australia-wide.

BVP FILTER KITS

92955807	N-Series with 4HE1 Turbo Intercooled Engine (SiTEC 130/140/145/170)	\$36.30
92955808	N-Series with 4HE1/4HF1/4HG1 Engine \SiTEC 110/115/120 excluding NPS)	\$33.05
92955811	N-Series with 4HK1 Engine (SiTEC 150/175)	\$44.85
92955812	F-Series with 6HH1 Engine (SiTEC 175/200)	\$53.20
92955815	F-Series with 6SD1 Turbo Engine (SiTEC 270)	\$68.25
92955816	F-Series with 6SD1 Turbo Engine (SiTEC 275)	\$65.65
92955818	F-Series with 6HK1-TCS Engine (SiTEC 255)	\$44.05
92955820	C&E Series (Giga) with 6WF1/6WG1 Engine (SiTEC 385/425 from 01/03/2004)	\$45.95



BVP WIPER BLADES

5876100321	450mm U-Hook Type	\$10.00
5876100341	500mm U-Hook Type	\$11.50
5876100351	550mm U-Hook Type	\$13.00



BVP CLUTCH BOOSTERS

1876100830	FS*/FT*/FV* with 70mm Cyl diameter MY1996-2006	\$430.75
1876100880	FV* with 90mm Cyl diameter MY1996-2006	\$438.15
1876100890	FR*/FS*/FT*/FV* with 90mm Cyl diameter MY2008-onwards	\$366.65
1876100910	EX*/CX*/CY* with 105mm Cyl diameter MY2001-06	\$441.45



BVP KING PIN KITS

5876103030	NNR/NPR MY2008-onwards	\$135.90
5876103040	NKR/NLR/NMR/NNR/NPR/NQR MY2008-on	\$135.90



BVP CLUTCH KITS

1876101750	15" Organic - FR*/FS*/FT* with 6HK1-TCC/TCN Engine & MZW6 Transmission (2010-2017)	\$716.75
1876101910	15" Organic - FR*/FS*/FT* with 6HK1-TCC/TCN Engine & MZX6/MZW6 Transmission	\$939.00
1876101991	15" Ceramic - FV*/GV* with 6HK1 TCS Engine & ZF 9S1110 Transmission	\$881.75
5876102340	14" Organic - FR*/FSS with 4HK1 TCS & MZX6/MZW6 Transmission (Pre-2016)	\$662.20
5876102040	13" Organic - NP*/NQ* with 4HK1 Engine & MYY Transmission	\$405.70
5876102320	13" Organic - NP*/NQ* with 4HK1 Engine & MZZ Transmission	\$463.45
5876102060	12" Organic - NL*/NN* with 4JJ1 Engine	\$409.30



Merchandise



92958875
ISUZU N-SERIES
TOY TRUCK
(NOT FOR CHILDREN UNDER 3 YEARS)
\$34.35



92958816-818
BASEBALL CAP
(RED, BLACK OR CHARCOAL - ONE
SIZE FITS MOST)
\$28.50



92958099
BADGE CAP
\$14.40



92958676
LEGIONNAIRE CAP
(NAVY BLUE - ONE SIZE FITS MOST)
\$21.65



92958457
WIDE BRIM HAT
(BLACK - ONE SIZE FITS MOST)
\$22.80



92957659
COFFEE MUG
(BLACK - 480ML)
\$13.50



92958137
THERMO DRINK BOTTLE
(RED - 500ML)
\$13.60



92958676
SUMMER PACK
(INCLUDES WATER BOTTLE,
COOLER BAG & HAT)
\$67.60



92958891
DELUXE COOLER BAG
(BLACK)
\$57.60



92958677
COLLAPSIBLE
COOLER BAG
(BLACK)
\$61.65



92958768
MUDFLAP-STYLE
BAR COASTERS
(SET OF 6)
\$30.20



92958176
BLUETOOTH SPEAKER
\$23.10



92958538
WIRELESS
PHONE CHARGER
\$10.60



92958481
MULTI-PURPOSE TOOL
\$38.90



92955855-860
SHORT SLEEVE
WORK SHIRT
(NAVY BLUE - VARIOUS SIZES)
\$55.50



92958493-504
MENS & WOMENS
ASTON POLO SHIRT
(BLACK - VARIOUS SIZES)
\$58.15

Isuzu Trucks Dealer Network

Isuzu has the largest truck dealer network in the country, with all 75 locations providing the highest quality Genuine Parts, backed by industry-leading support and warranty. This all means reduced downtime for our customers, freeing them up to focus on the important stuff. And when the parts are fitted by an authorised Isuzu technician, you'll be helping extend the working life of your truck and getting peace-of-mind that money just can't buy. Because reliability is everything!



Scan the QR Code to find your nearest Isuzu Trucks dealer.